

EMS at an MCI

Jeff Regis, EMT-P
Southern Maine EMS

qa@smems.org

www.smems.org



Today's Schedule

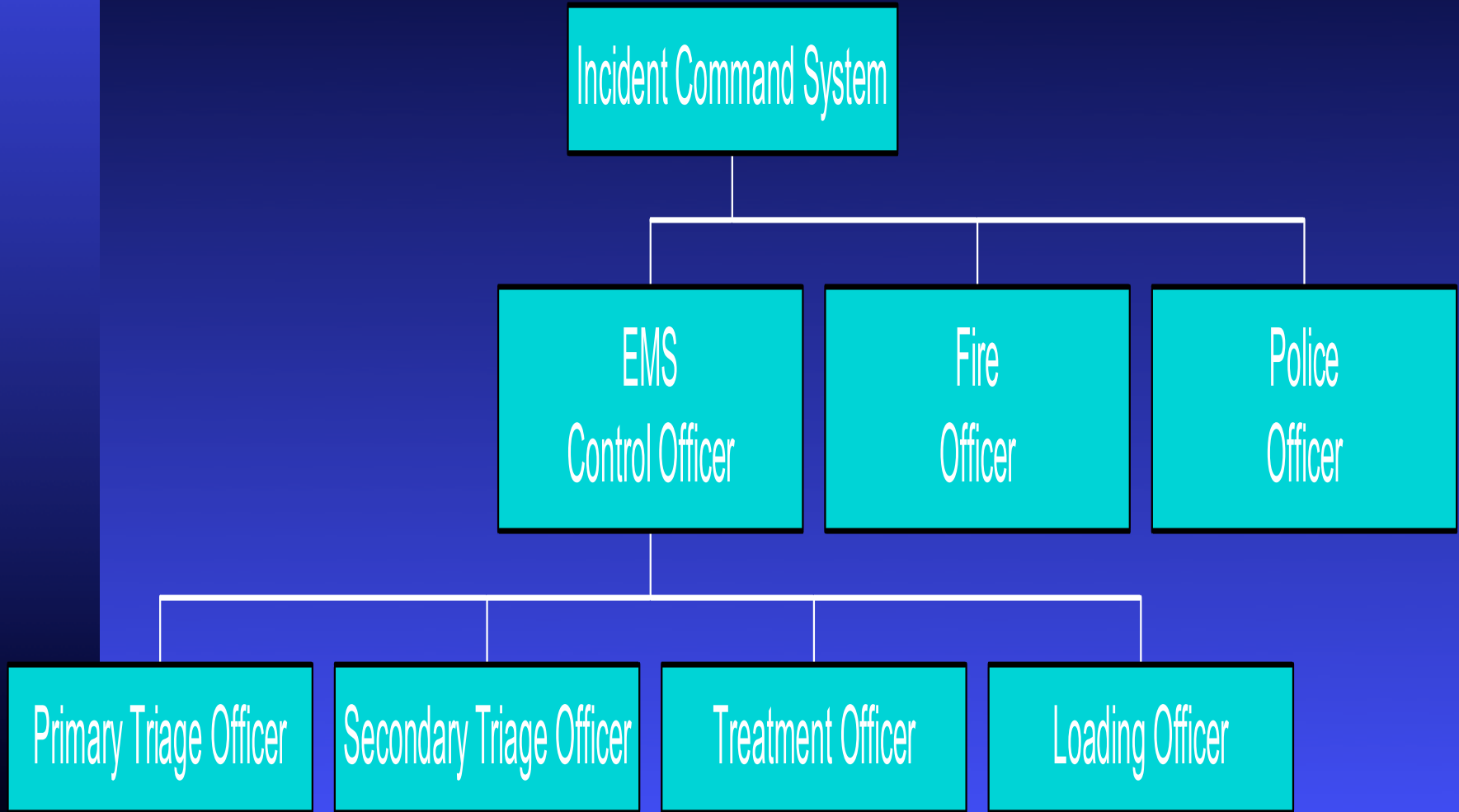
- EMS Function in ICS
- EMS at an MCI
- SMART Tag System



Multiple or Mass Casualty

- Multiple-one more patient than immediately available resources can manage
- Mass-catastrophic event
 - ◆ 9/11
 - ◆ Hurricane Katrina
 - ◆ Ice Storm of 1998
 - ◆ Sports Function at your School

EMS Function in ICS



CSCATTT at an MCI

- Command & Control
- Safety
- Communication
- Assessment
- Triage
- Treatment
- Transport

EMS In An MCI

- Initial Problem-Casualties out-weight resources at initial response
- Objective-effective scene management & optimum use of resources
- Avoid Crainal-Rectal Syndrome at all costs

THE GOLDEN HOUR

We know that:

"The critical trauma patient has only 60 minutes from the time of injury to reach definitive surgical care, or the odds of a successful recovery diminish dramatically"

**Pre-Hospital Trauma Life
Support, Second Edition,
Patient Assessment
and Management.**

THE GOLDEN HOUR

You have a finite amount of time to find the balance if you are going to produce the maximum no. of survivors from the incident.

AIM

Your aim at any multiple casualty incident should be to produce the **largest number of survivors**

TRIAGE

“Large scale triage is the hardest job anyone in pre-hospital care will ever do.”

AJ Heightman,

Mass Casualty Incident Management

A practical approach to solving
complex, operational dilemmas

TRIAGE

WHY?

To get the right patient
in the right place
at the right time

TRIAGE

HOW?

By a dynamic system
which is:

QUICK

SAFE

REPRODUCIBLE

TRIAGE CODING

Each case is given a priority **colour code** depending on the level of treatment required:

Primary Triage

- Patients rapidly assessed
- Life-threatening conditions corrected
- Airway
- Bleeding
- Shock

Primary Triage Officer

- Assigned by EMS Control Officer
- Primary Triage Vest
- Rapidly & continuously assessing patients
- Identifying life-threatening conditions
- Assigning & directing care for patients with life-threatening conditions
- Monitoring changes in conditions of patients

Primary Triage Officer

- Three questions
- To what degree is the condition life-threatening
- Will interventions save a life
- Impact on resources

Primary Triage Officer

- Three critical conditions managed during Primary Triage: ABS
 - ◆ Airway
 - ◆ Bleeding
 - ◆ Shock
- CPR not performed

Primary Triage Officer

- Difficulty or not breathing
 - ◆ Open airway
- Blood flowing from wound
 - ◆ Instruct another patient to apply direct pressure
- Progressing into shock
 - ◆ If not contraindicated elevate extremities and cover patient

Primary Triage Officer

- Is patient responsive
- Is bleeding found
- Signs or symptoms of shock

Primary Triage Officer

- Appointed by & reports to EMS Control Officer
- Circulates among patients
- Identifies life-threatening conditions: ABS
- Directs others to manage ABS
- Continues to circulate among patients
- Relieved by EMS Control Officer

TRIAGE of Children

Unfortunately children are
involved in multiple
casualty incidents

Typically they get
over prioritised

TRIAGE of Children

Triage systems based on adult physiology will not provide accurate triage.

The over prioritizing of children will take valuable resources away from more seriously injured adults.

TRIAGE of Children

There is only ONE evidence based method for triaging children.

The Smart Pediatric Tape gives you a rapid system which helps maximize resources on scene

Smart Tape

- Similar to Broselow Tape
- Alert & moving all limbs or walking-Green, Priority 3
- If not Green-then use Smart Tape
- Lay Smart Tape as flat as possible
- If between two sections-use section for LONGER child
- Infants under 50cm are unlikely to be out of hospital-Red, Priority 1

Secondary Triage

- Patients sorted for evacuation to Treatment Area
- Four Categories:
 - ◆ Red
 - ◆ Yellow
 - ◆ Green
 - ◆ Black

Secondary Triage Officer

- Assigned by EMS Control Officer
- Secondary Triage Vest
- Identify & correct life-threatening conditions
- Classifies patient for further treatment
- Applies Triage Tags
- Reports number/type tags to EMS Control Officer

TRIAGE CODING

PRIORITY	TREATMENT	COLOUR
1	IMMEDIATE	RED
2	URGENT	YELLOW
3	DELAYED	GREEN
4	EXPECTANT	BLUE
	DEAD	WHITE

Secondary Triage Officer

- Category 1-Red
 - ◆ Major blood loss
 - ◆ Multiple system injuries
 - ◆ Severe respiratory distress
 - ◆ Serious head injuries

Secondary Triage Officer

■ Category 2-Yellow

- ◆ Do not require immediate transport
- ◆ Non-life or limb-threatening injuries
- ◆ Dislocations
- ◆ Lacerations
- ◆ Non-shock injuries

Secondary Triage Officer

- Category 3-Green
 - ◆ Minor or no injuries
 - ◆ Small abrasions & bruises
 - ◆ Separate from Red & Yellow Tagged

Secondary Triage Officer

- Category 0-Black
 - ◆ CPR not indicated with limited resources
 - ◆ Left where found at scene-if possible

Secondary Triage Officer

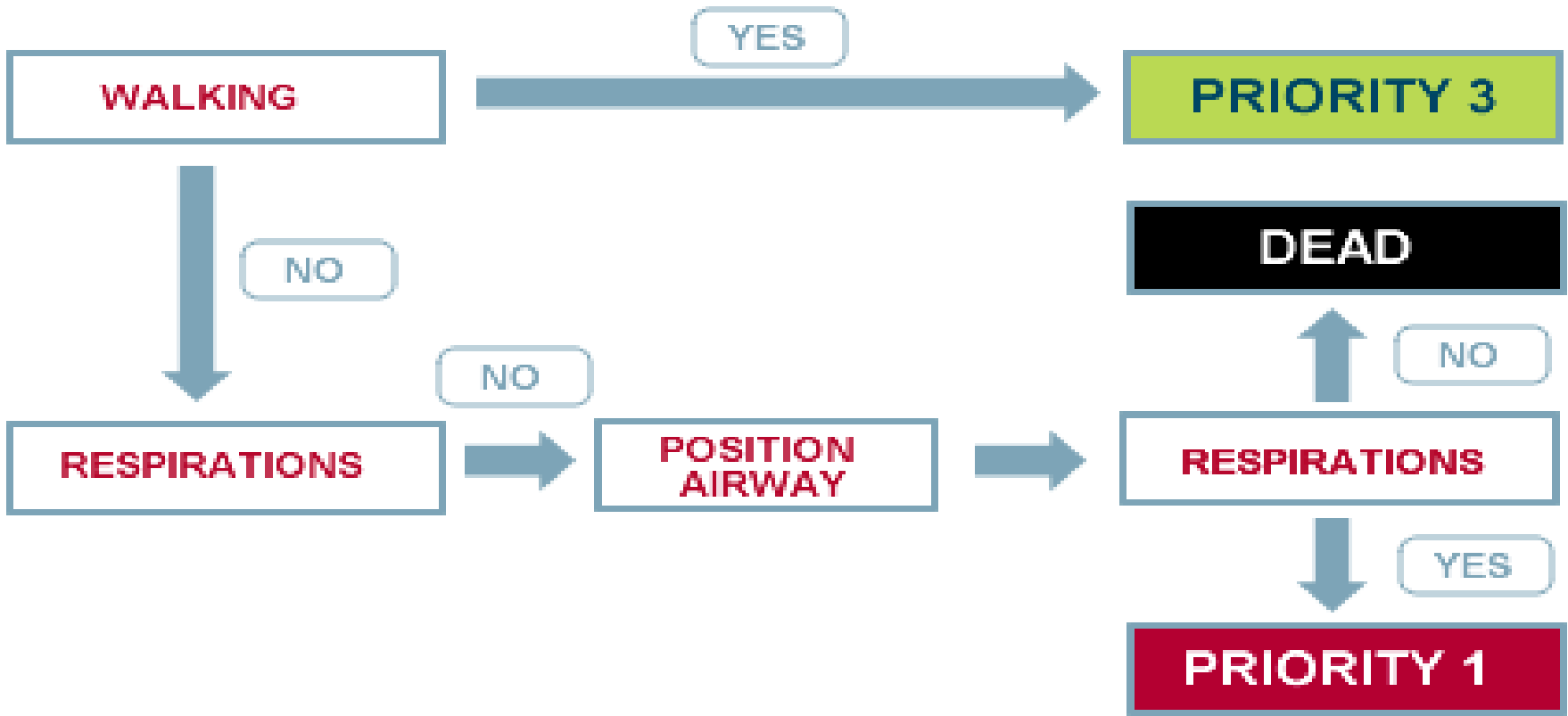
- Patient in cardiac arrest before critical needs of group met
- Will patient need ambulance transport
- Will delay in transport jeopardize life or limb

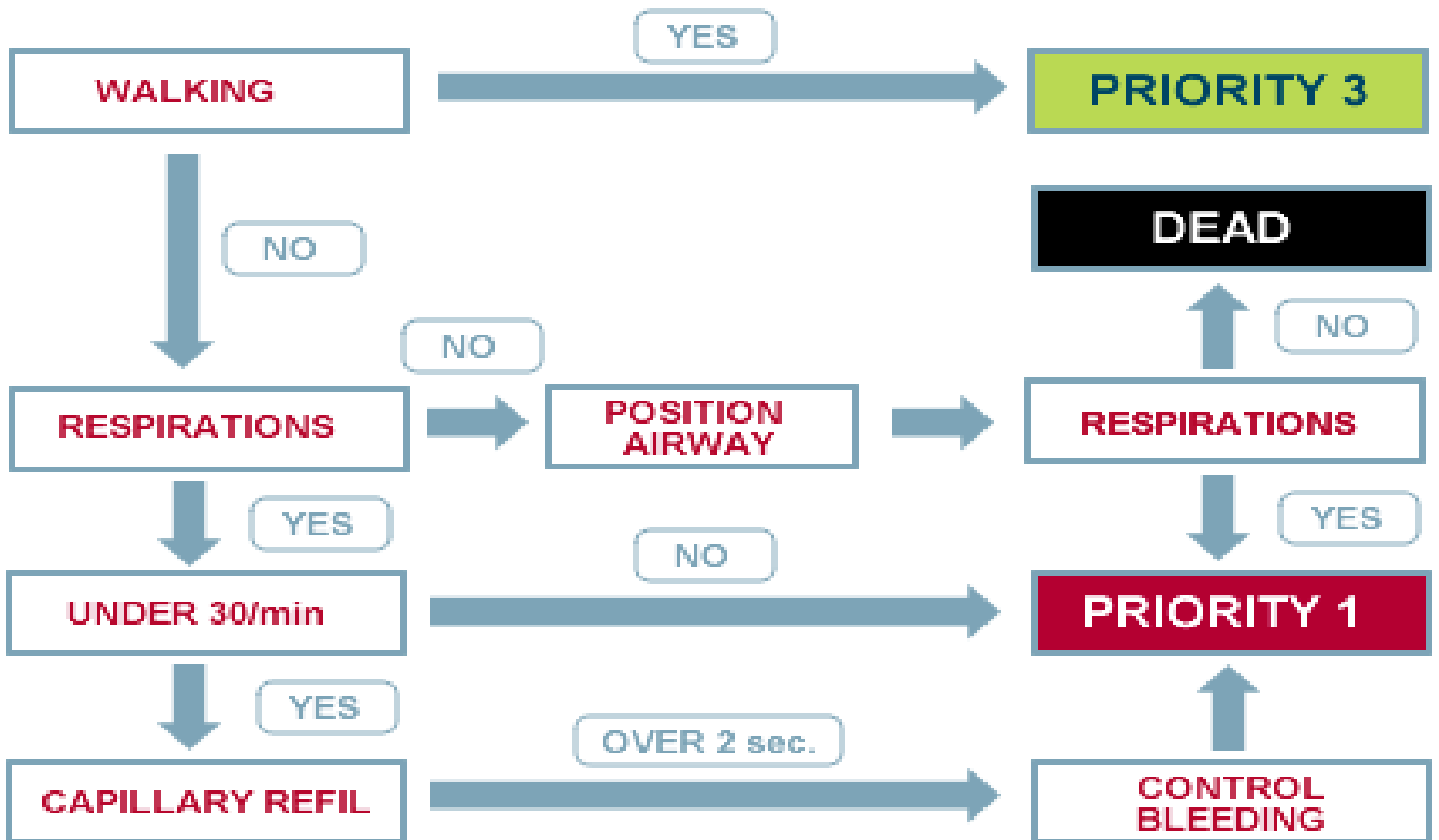
YES

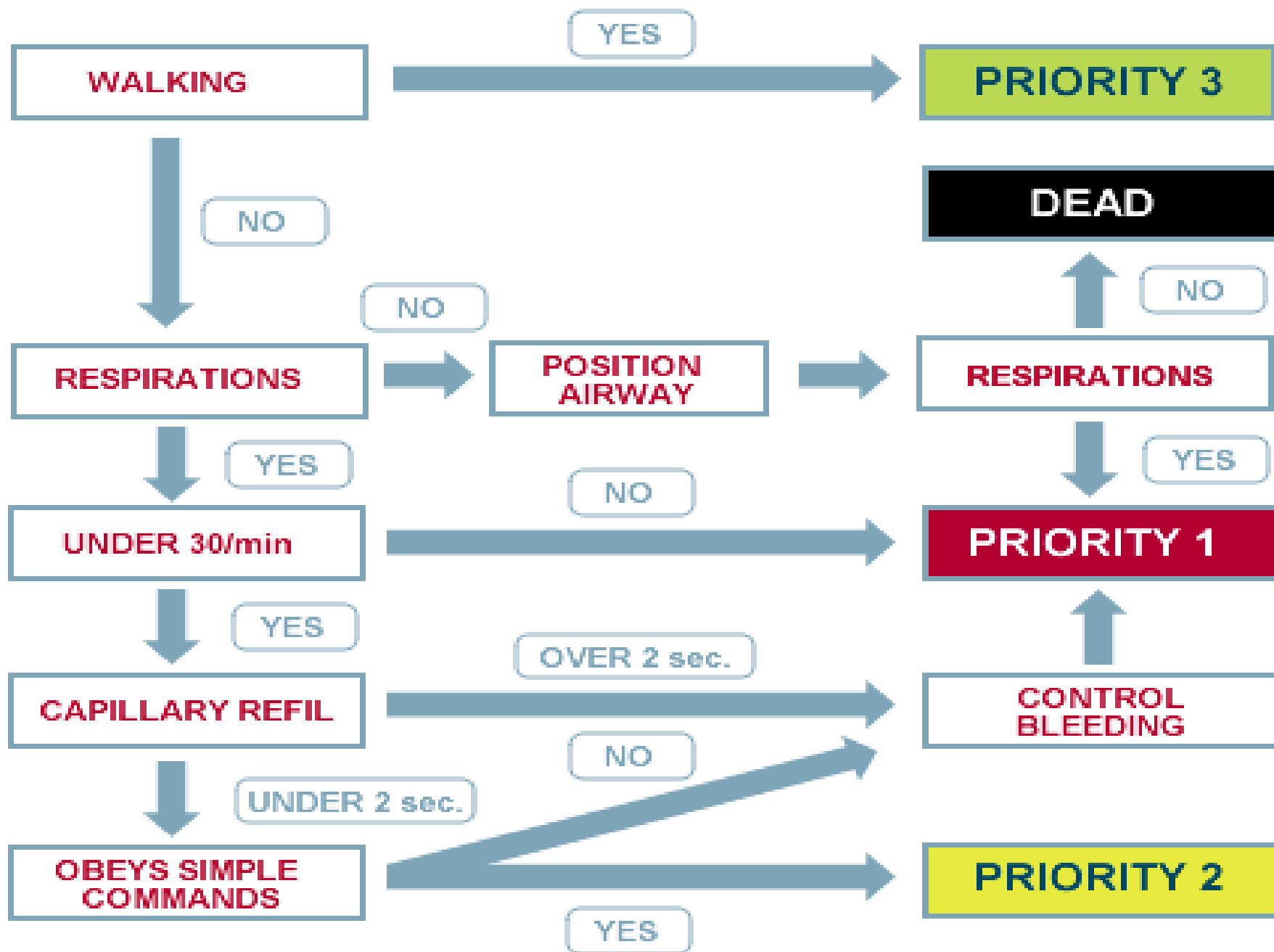
WALKING

PRIORITY 3









Secondary Triage Officer

- Care at MCI is BASIC
 - ◆ Bleeding control
 - ◆ Airway management
 - ◆ Shock management followed by
 - ◆ Immobilization on backboards
 - ◆ Classification with Triage Tags

Secondary Triage Officer

- Appointed by & reports to EMS Control Officer
- Identify & correct ABS
- Classifies & Tags patients
- Provides number and category of patients to EMS Control Officer

Treatment Officer

- Appointed by & reports to EMS Control Officer
- Supervises patient care
- Communicates with receiving hospitals-in some systems
- Monitors & requests additional supplies
- Prioritizes patients for transport
- Communicates with Transport Officer
- Updates EMS Control Officer

Treatment Officer

- Treatment Area
 - ◆ One Check-In point-towards MCI scene
 - ◆ One Exit-Point-towards loading area
 - ◆ 6 ft. between patients
- Red (A/B if needed) and Yellow
- Green Area nearby

Treatment Officer

- Triages all patients again
 - ◆ Retags if necessary-up or down
 - ◆ Uses A/B if lacking resources
- Care rendered documented on Triage Tag

Loading/Transport Officer

- Appointed by & reports to EMS Control Officer
- Sets up Loading Area
 - ◆ Adjacent to Treatment Area-Red Tags
 - ◆ Multiple vehicles
 - ◆ Minimize “backing up”
 - ◆ Exhaust fumes

Loading/Transport Officer

- Sorts patients for loading priority
 - ◆ Red A/B, Yellow, Green, Black
- Assigns patients to ambulances
 - ◆ Paramedic, Intermediate, Basic
- Assigns ambulances to hospitals-include directions
- Communicates with Treatment Officer

Loading/Transport Officer

- Communicates with hospitals:
 - ◆ Tag color
 - ◆ Last 4 digits of tag number
 - ◆ Sex & age of patient
 - ◆ Major injury/problems
 - ◆ Estimated time of arrival

Loading/Transport Officer

- Completes report on patients loaded/transported
 - ◆ Tag color
 - ◆ Last 4 digits of tag number
 - ◆ Hospital destination
 - ◆ Transporting service
 - ◆ Time of departure
- Updates EMS Control Officer

Loading/Transport Officer

- Balance resources to patients
 - ◆ How does transport of one patient affect the rest
 - ◆ Use limited resources to assist the greatest number of patients

Supplies

- Vests for EMS Officers
 - ◆ EMS Control
 - ◆ Primary Triage
 - ◆ Secondary Triage
 - ◆ Treatment
 - ◆ Loading/Transport

Supplies

- Broselow Tape
- Sunscreen
- Biohazard bags w/twist ties
- Trash bags w/twist ties
- Clip boards/Pencils
- 2 each 100 ft. colored extension cords:
 - ◆ Red/Yellow/Green
- Camera

Smart Incident Command System

- Developed in Europe

Questions

- Thank you
- qa@smems.org

