



**Baltimore City Fire Department
EMS Division
All ALS... All the Time**

Presented by

Division Chief Lloyd R. Carter, BS, NREMT-P



Mission Statement

**The Baltimore City Fire Department
Emergency Medical Service continues to
strive to provide the highest quality of care
to the citizens of Baltimore City and all
those we serve (Our Customers). To this
end, we persevere to be on the cutting edge
of innovation in our approach.**

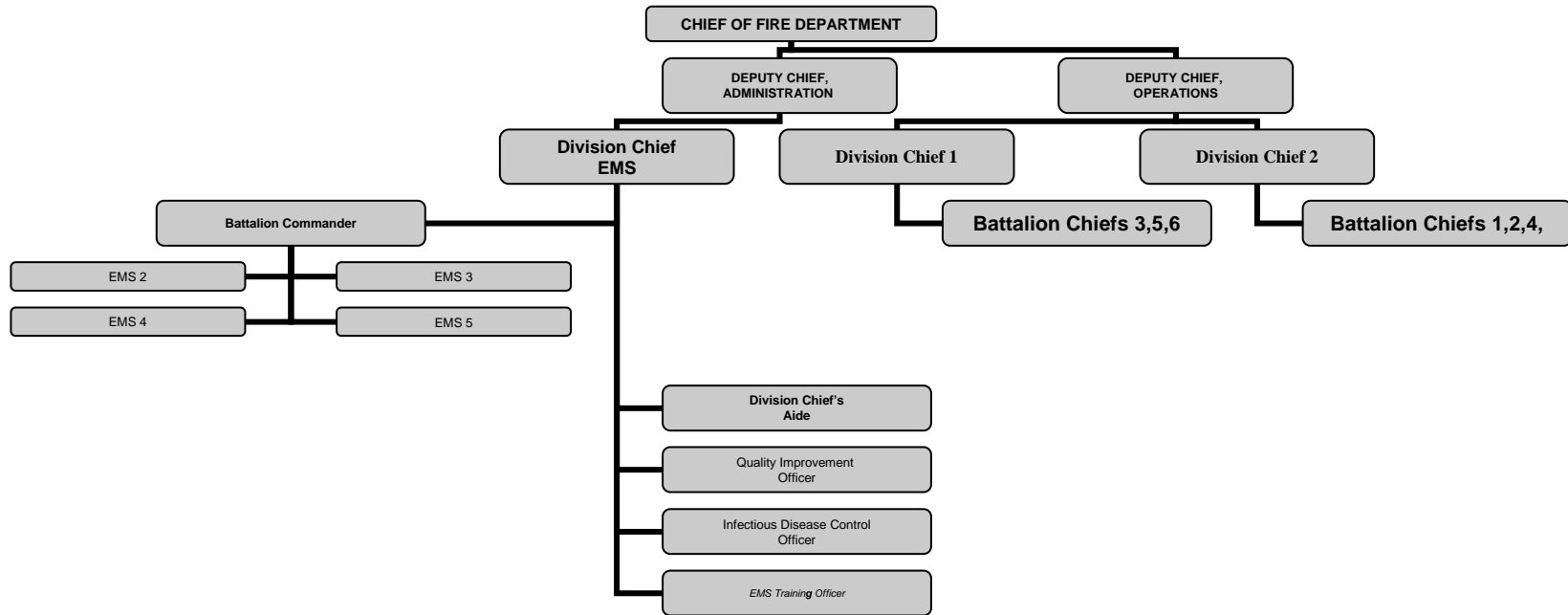


History

- ❧ **The EMS Division is the sub-division in the Baltimore City Fire Department responsible for the emergency medical services for Baltimore City.**
- ❧ **The system is a Fire Based system**
- ❧ **Established in 1927.**
- ❧ **Baltimore City EMS was instrumental in the development of:**
 - **CPR**
 - **Airway adjuncts (S tube)**
 - **Prototype "Box Type Ambulance.**

BALTIMORE CITY FIRE DEPARTMENT

Organizational Structure



THE EMS DIVISION (Staffing)

- ∞ **Division Chief**
- ∞ **Battalion Commander**
- ∞ **3 Specialty Captains**
- ∞ **4 Captains (1) per shift**
- ∞ **12 Lieutenants (3) per shift**
- ∞ **198 Paramedics (Slotted)**
- ∞ **Over 500 ALS providers**



Fire Department (EMS Operations)

- ❧ **Emergency Medical Dispatch**
- ❧ **36 Engines ALS Equipped**
- ❧ **22 ALS MEDIC UNITS**
- ❧ **18 Trucks ALS Equipped**
- ❧ **6 Ready Reserve ALS Units**
- ❧ **4 "Peak Time ALS Units"**
- ❧ **4 Mass Casualty Trailers**
- ❧ **3 ALS Bike Teams**
- ❧ **2 EMS ALS Gators**
- ❧ **1 EMS Command Vehicle**

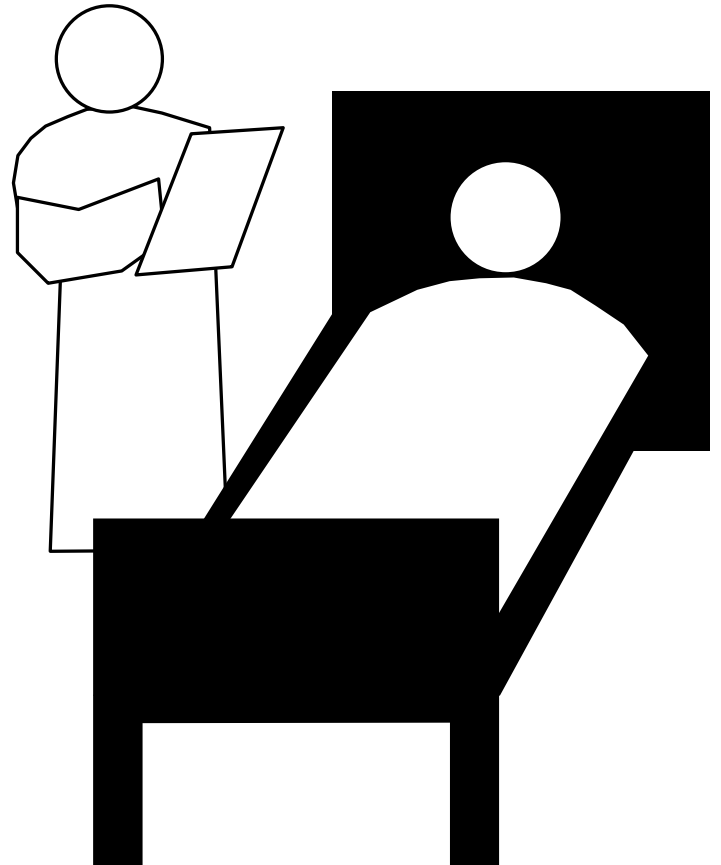


LEVELS OF CERTIFICATION

⌘ **E. M. T.-B.**

⌘ **C. R. T.-I**

⌘ **E. M. T.-P.**





Operational Statistics

⌚ **FY 05 Responses : 140,610**

⌚ **FY 05 Transports : 83,828**

⌚ **FY 05 Average Response Time: 6 minutes**

⌚ **11 million dollars collected from EMS Billing**



Changing The Culture

- ⌚ **In 2005 Chief Goodwin established that EMS would be the # 1 priority for the Fire Department. All divisions will concentrate their efforts to improve the overall efficiency and improve the delivery of EMS to the citizens of Baltimore.**



Changing the Culture

- **In March 2006 all of the Fire Suppression units became ALS equipped**
- **Traditional EMS duties are being assigned to Fire Suppression personnel**
 - **Medic unit inspections**
 - **Suppression Chiefs respond on EMS incidents**
 - **Suppression officers manage surge unit implementation**



Resistance to Change

- **Members stuck in traditional ways**
- **Members afraid of change**
- **Lost focus of the mission**



Mechanism for Change

⌚ **Clear Communication**

⌚ **Achievable Goals**

⌚ **Compromise**

⌚ **Strong Leadership**



Summary

- **Baltimore City Fire Department EMS Division is continuing to make strides to become a prime example of a High Performance EMS system.**
- **By providing a true intergration of EMS and Fire Suppression at the highest levels of provision**

All ALS... All The Time





QUESTIONS ???
